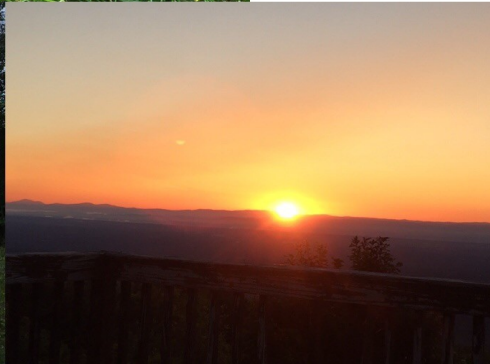
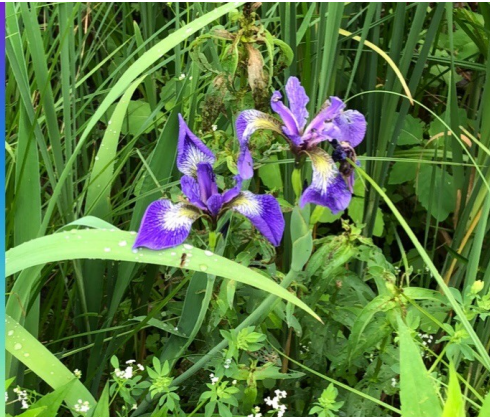


Retreat Handbook



Updated December, 2019



Welcome to CAMP PINNACLE!
We are nestled in the heart of the
Helderberg Mountains.

Included in this packet is an outline
of offered services and facilities.

Pricing is by phone or email only

TABLE OF CONTENTS

- **Who we are and Statement of Faith**
- **Staff**
- **Dining and Meeting Spaces**
- **Lodging Options**
- **Activities and Special Places**
- **Map of Grounds**
- **Retreats**

**CONTACT
INFORMATION**

Camp Pinnacle
621 Pinnacle Road
Voorheesville, NY 12186
518-872-9100
1-866-RETREAT (738-7328)
518-872-0036 (fax)
info@camppinnacle.org

OUR MISSION



Our Motto

"Helping people walk in God's paths"

Our Mission

"The aim and purpose of Camp Pinnacle has always been the same; to lift up Jesus Christ as the power of God unto salvation, to develop Christian character in young people and to give them a happy and wholesome vacation."

Miss Lucy Jones, The Long Road to Pinnacle 1947

Our Vision

Our vision is to establish Camp Pinnacle as a prominent place of ministry in the Kingdom of God, a special place to experience the "fruit of the Spirit," effectively reaching the lost and discipling leaders in the Capital region, the greater Northeast and beyond.

Our Purpose

God has strategically placed Camp Pinnacle's 880-acre facility at the top of the scenic Helderberg Mountains, overlooking the Capital District of New York State to impact many people for Christ.

The purpose of Pinnacle Ministries is to build the Kingdom of God by preaching the gospel, making disciples, enhancing the ministry of the local church by partnering with them and other ministries.

We accomplish this through summer camps, year-round retreats, conferences and other opportunities God makes available to introduce people to Jesus, promoting a closer relationship and service with God.

We are always growing in our knowledge of Christ through the study and application of God's Word, the Bible. Everyone associated with Camp Pinnacle embodies the message of Jesus Christ so that the good news is seen in word and deed. In every interaction we always speak the truth in the love of Christ.

Our Bible Verse

"Come let us go up to the mountain of the Lord... He will teach us His ways, so that we may walk in his paths." Isaiah 2:3

Our Credentials

God started this ministry in 1898 and its need is greater today than ever. We were incorporated in 1915 and are a registered 501c3 organization. We are a member in good standing with the Christian Camp and Conference Association.

Our Message is Jesus

God loves us so very much and wants to restore us back to Himself!

RULES AND REGULATIONS

A few rules we would like you to remember when you come visit us:

1. No smoking on our grounds. We are a tobacco free campus.
2. No "vaping" in our buildings. It does set off our fire alarms. This is in accordance with our "no smoking on grounds" rule and we prefer you do not vape either.
3. No alcohol is allowed on our premises. Camp Pinnacle is an alcohol free campus. If we find alcohol in your possession while you are on campus or in your room after you leave, you will not be allowed to return.
4. Please do not enter any pens with live animals without one of OUR staff members with you. The animals are tame, but accidents do happen and we like to prevent them.
5. Please tidy your room after you leave, fold blankets if provided and strip your bed.
6. Please double check your room for any items left behind before check-out. This includes under your bed, bathrooms, and common areas. Often times these are the places we find most left items.
7. We do have quiet time here at Camp from 11pm to 7am. Please be kind and considerate of those around you. If you have activities planned for later in the night, please let our Director or Office Manager know ahead of time so we can plan accordingly.

Have fun and we hope you enjoy your stay here on God's Mountain!

Our Statement of Faith

- We believe in the Divine inspiration of the Bible, that the books from Genesis to Revelation are without error, and that they are the infallible authoritative Word of God
- We believe that there is one God, eternally existent in three persons: Father, Son and Holy Spirit.
- We believe in the Deity of our Lord Jesus Christ, in His virgin birth, in His sinless life, in His miracles, in His vicarious and atoning death through His shed blood, in His bodily resurrection, in His ascension to the right hand of the Father, and in His personal return to reign in power and in glory.
- We believe in the fall of man, his moral depravity, and the necessity of the new birth.
- We believe in the substitutionary atonement through the shed blood of Christ, in justification by faith, and in regeneration by the Holy Spirit. This is God's provision for the salvation of lost and sinful men from the penalty and power of sin.
- We believe in the present ministry of the Holy Spirit, by whose indwelling the Christian is enabled to live a Godly life.
- We believe in the resurrection of both the saved and the lost: they that are saved unto eternal life, and they that are lost unto eternal punishment.
- We believe in the spiritual unity of believers in Christ

Moral Issues

The Corporation accepts the Holy Bible as the authoritative Word of God and adheres to traditional Biblical Christian values. In ministry and practice, the Corporation believes that sexual immorality (including, but not limited to, homosexuality, adultery, pre-marital sex) is condemned by God as an immoral and unacceptable lifestyle. Therefore, we do not knowingly employ those who practice forms of inappropriate sexuality. Additionally, the facilities will not be made available to those groups who would violate our religious beliefs.

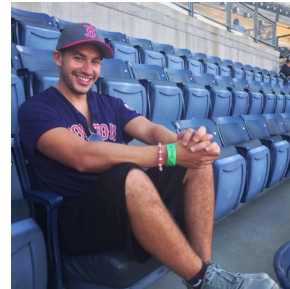
Our Staff



Stephen Flach
Executive Director



Audrey Beaver
Administrative Assistant



Domenic Cecconie
Summer Camp Director



Janet Tanis
Housekeeping/ Hospitality



Bill Passmore
Chef



Denise Passmore
Kitchen Assistant



Lisa West
Marketing



Rich Bartley
Maintenance



Bill West
Maintenance



Bill Di Fulvio
Maintenance



Pat Richardson
Maintenance



Jerry Parent
Maintenance

Dining and Meetings



Stevens Hall has a seating capacity of 185 people and can be used for meals as well as meetings.

Stevens Hall also known as the Dining Hall, is known for it's delicious buffet style food. Our Chef is on staff year round and constantly creating amazing dishes. Our Dining Hall also provides a Snack Shop just down the stairs with a fireplace to lounge beside, foosball table, pool table, snacks and more. This extra room seats 40 people.



The **Bessie Wood Lounge** seats up to 60 people and has its own bathrooms. This room also offers a kitchenette with coffee. Bessie Wood is conveniently located directly off of Stevens Hall, our Dining Hall and kitchen. This is a cozy meeting room and can also be set up with music and a projector.

Bessie Wood accommodates 60 people comfortably.





Tabernacle



The **Tabernacle** is a gorgeous meeting space designed for worship with our sound system set up and vaulted ceilings. It offers a small breakout room and a large fireplace for heating. The "Tab" has a seating capacity of 160 people.



Gymnasium

The **Gymnasium**, in addition to being used for indoor basketball, offers volleyball and rock-wall climbing. The gym can also be used as a large meeting space with a seating capacity of 325.

Upstairs above the gym we have a loft that can be used as a smaller meeting space.



Gym Loft



Christie Gardens

Rustic Lodging Options



Pine Ridge

Pine Ridge Campus offers bunkhouse style rooms with a separate building for bathrooms and showers. This campus allows you a little more privacy for a business or family event. Enjoy our rustic view with a path that takes you directly up to our Sunset Overlook.

There are seven cabins that sleep 10 people and one cabin that sleeps 8. On our Pine Ridge Campus we offer a large indoor field house which can be used for games as well as meetings. This field house also offers a kitchenette with cabinets and an outdoor sink.

Pine Ridge Campus sleeps a total of 78 people and contains seating for up to 200 people.



PR Field House

Our **White Birch Campus** is directly across the road from Camp Pinnacle's Main Campus. Located on Saddleback Road, it's only a short walk to Old Rim which has a lovely view of Albany. You can wake up in the morning and walk out to see our horses directly across the dirt road. Sunrises are breathtaking on this side of campus.

We offer two different types of living quarters at White Birch. First being our Rustic dorms which have a total of 6 cabins and 10 beds in each. The restroom and showers for these cabins are a separate facility located just outside the building to the right. The second style is our indoor dorms which offers 6 rooms that sleep ten in each and a large staff room that contains 18 beds. Bathrooms and showers are located directly inside the building.

White Birch Campus also provides a small field house seating 200 with rooms for games. In addition the field house, there is an outdoor fire pit with rustic log benches, and an outdoor stage which is perfect for a summer meeting or worship center.



White Birch Bunkhouse

White Birch sleeps a total of 60 in the rustic bunkhouse and 78 in the regular dorm building. Total seating capacity for the field house is 200 people.



White Birch Dorm



WB Field House

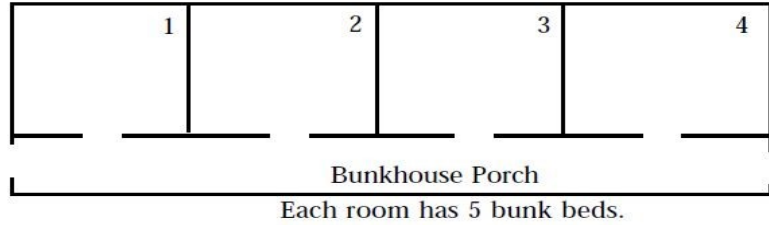


Lodging and Grounds

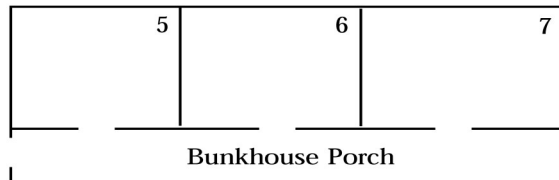
Pine Ridge Accomodations Floor Plan & Housing List



Pine Ridge Bunkhouse 1

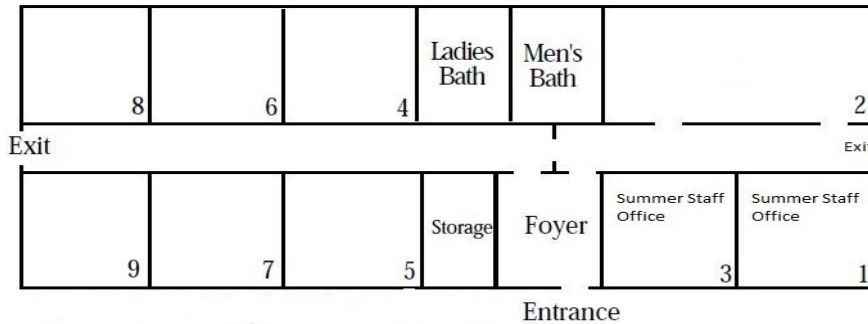


Pine Ridge Bunkhouse 2

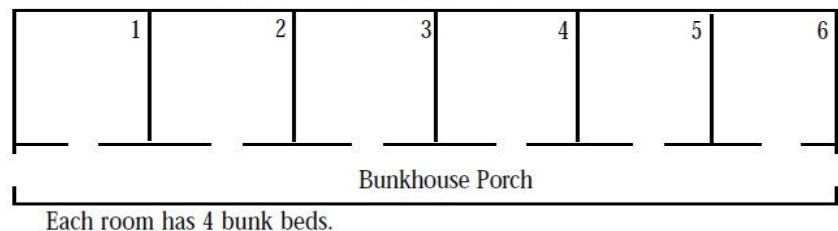


These two bunkhouses share a shower/bathroom facility located between the two housing units.

White Birch Lodge



White Birch Bunkhouse



McFate Lodge

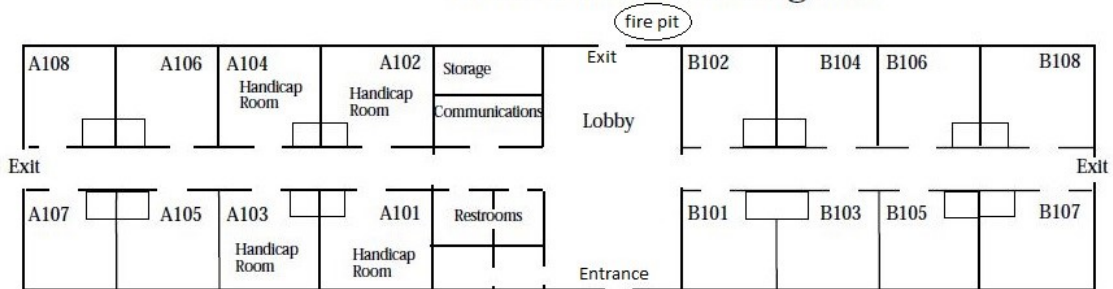


McFate Lodge

McFate Lodge is our finest facility. Laid perfectly between the trees and just a short walk to the dining hall or gym. This lodge has two wings with 8 rooms on either side with a large common room or meeting area dividing them. Four of the rooms are fully handicap accessible. Each room contains one queen size bed and one set of bunk beds making this more of a hotel style feel. The common room is a cozy lounge with a gas fireplace and comfortable chairs ideal for an intimate retreat. This room holds up to 50 people and has its own kitchenette. McFate Lodge has a total sleeping capacity of 64 people.

McFate Lodge

Floor Plan & Housing List

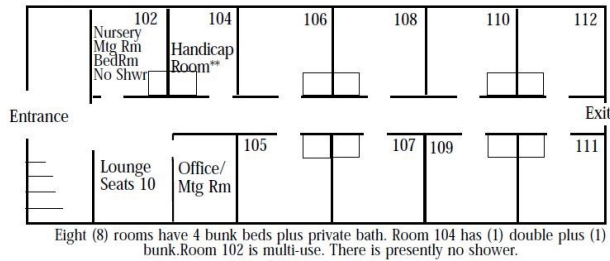


McFate Lounge

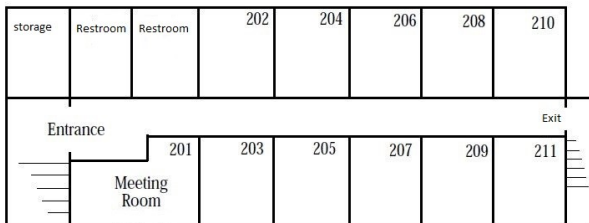
Mekeel Lodge Accomodations

Mekeel Lodge

1st Floor



2nd Floor



Mekeel Lodge is our largest lodging area. This is a two story building with hotel style rooms on the first floor and dorm style rooms on the upper floor. There are 8 rooms on the first floor sleeping a total of 64 people and each has a private bathroom. The first floor also has a common area which is a cozy place to relax or conduct a small meeting.

The upper floor of Mekeel has a similar sleeping layout but has two common bathrooms at the end of the hall. There is a large common room which accommodates up to 40 people for a comfortable lounging and meeting space or game night.

Mekeel Lodge has a total sleeping capacity of 144 people.



Mekeel Lodge

Camp Pinnacle Activities



Paintball



High/Low Ropes



Indoor Rock-wall

We offer a variety of activities including; fishing, horse-back riding, swimming, paintball, ropes challenge course, soccer, rock-wall, basketball, volleyball, canoeing, archery, hiking and outdoor spaces for writing and crafts!

Recreational Spaces



Snack Shop is located directly down stairs from the Dining Room. This room is stocked with snacks, pool and ping pong, café tables and foosball. In cooler months a roaring fire makes a perfect setting for hanging out or prayer and small groups meetings.



Snack Shop

Sacred Spaces



Prayer Rim

Prayer Rim is a ten minute hike past the White Birch dorm. A great place for a campfire prayer gathering.

Summer Dining or "The Ark" is located directly off the Snack Shop. This is a large open meeting room seating a total of 97 people. This room is best used in summer as there are many windows. It can also be heated for periods of time in the winter months.



Summer Dining ~ "The Ark"

Sunset is a ten minute hike from main Camp. A beautiful place for a youth and family gatherings.



Sunset

Our Location

We are located approximately 30 minutes (18 miles) from Albany International Airport, I-87 and I-90. In the Helderberg Mountains, just 20 minutes from Albany, we are centrally located in beautiful Upstate New York.

Feel free to contact us for directions.

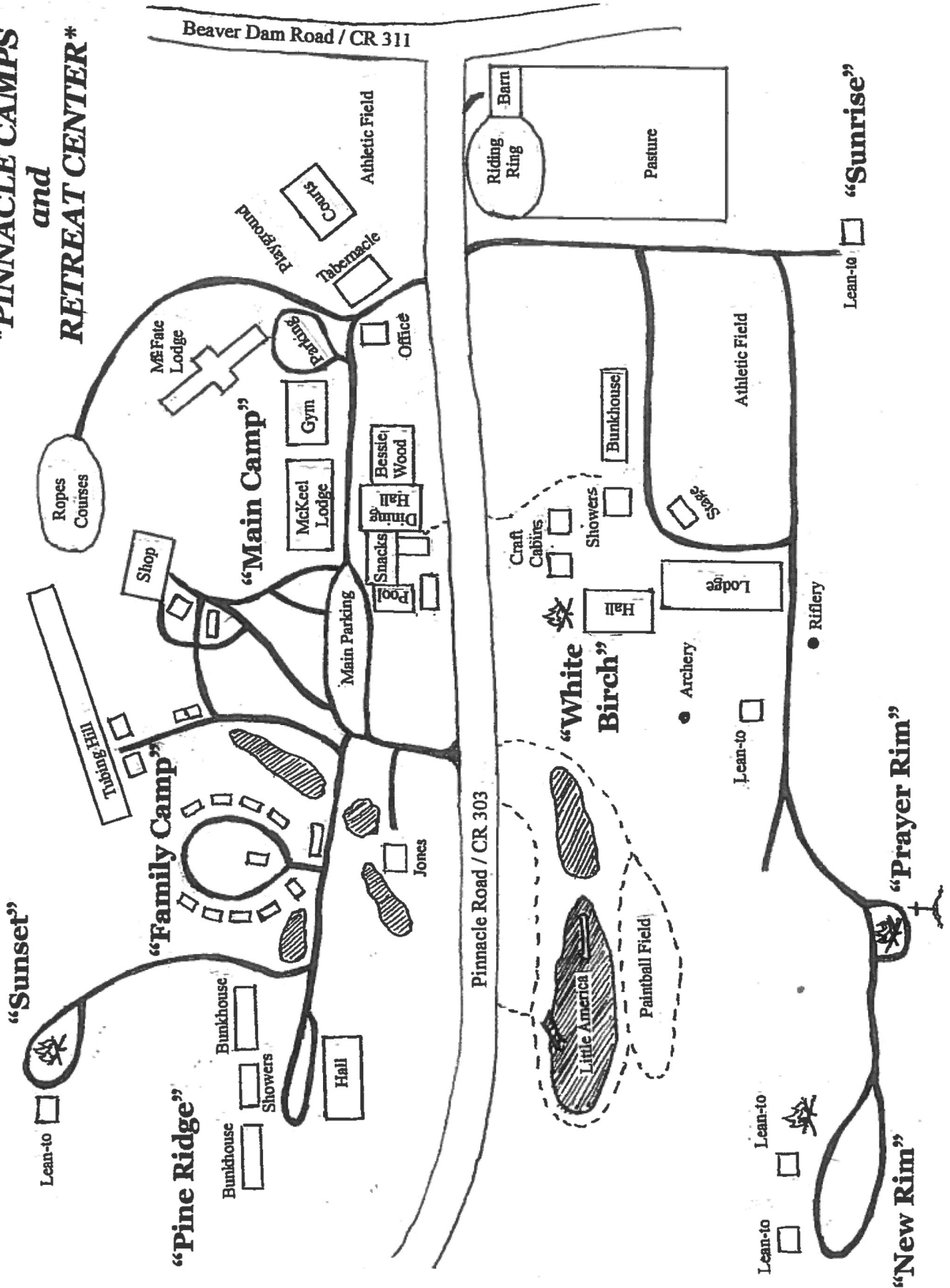
Our address:

621 Pinnacle Road
Voorheesville, NY 12186



Maps and Directions

PINNACLE CAMPS and RETREAT CENTER



From 155 & 20 in Guilderland

SR-155 (south-west) 3.9 miles
At traffic circle take first exit onto State Route 85A 3.8 miles
Turn right (west) onto SR-85 west.9 miles
Turn right (south) onto SR-157 "Thacher Park Rd." .9 miles
Turn left (south - west) onto CR-311 "Beaver Dam Rd." 1.6 miles
Turn left (south - west) onto CR-303 "Pinnacle Rd." .5 miles
ARRIVE Camp Pinnacle Main Entrance on RIGHT

From Albany International Airport

Leave the Airport following signs for SR-155 (south-west) 9.6 miles
*Watch for a Left turn to stay on SR-155 after approximately 1.5 miles
At traffic circle take first exit onto State Route 85A .3.8 miles
Turn right (west) onto SR-85 west.9 miles
Turn right (south) onto SR-157 "Thacher Park Rd." .9 miles
Turn left (south - west) onto CR-311 "Beaver Dam Rd." 1.6 miles
Turn left (south - west) onto CR-303 "Pinnacle Rd." .5 miles
ARRIVE Camp Pinnacle Main Entrance on RIGHT

From Interstate 87 traveling NORTH as from the Catskills & New York City

Leave the Thruway at exit 21B
Turn right (north) onto US-9W 6.9 miles
Turn left (north-west) onto CR-101 3.6 miles
Turn left onto SR-396 "Bridge St." 7.9 miles
*Name changes to CR-301 at 1.9 miles
Turn left (west) onto SR-443 "Delaware Tpk." 3.9 miles
*SR-443 becomes SR-443 & SR-85 at 1.9 miles
Turn right (west) onto SR-443 "Helderberg Trail" .3 miles
Turn right (north) onto CR-303 "Pinnacle Rd." 3.0 miles
ARRIVE Camp Pinnacle Main Entrance on LEFT

From Interstate 87 traveling SOUTH as from Saratoga Springs & Canada

At exit 1 Turn left onto ramp to merge onto I-90 east 1.4 miles
At exit 4 Turn right onto ramp onto SR-85 toward Voorheesville 12.1 miles
Turn right (south) onto SR-157 "Thacher Park Rd." .9 miles
Turn left (south - west) onto CR-311 "Beaver Dam Rd." 1.6 miles
Turn left (south - west) onto CR-303 "Pinnacle Rd." .5 miles
ARRIVE Camp Pinnacle Main Entrance on RIGHT

From Interstate 90

At exit 4 Turn right onto ramp onto SR-85 toward Voorheesville 12.1 miles
Turn right (south) onto SR-157 "Thacher Park Rd." .9 miles
Turn left (south - west) onto CR-311 "Beaver Dam Rd." 1.6 miles
Turn left (south - west) onto CR-303 "Pinnacle Rd." .5 miles
ARRIVE Camp Pinnacle Main Entrance on RIGHT

Notes

Camp Pinnacle is an ideal place for your retreat or conference. We have three separate campuses, over 40 buildings and accommodations for over 300 people to sleep, eat, meet and play until your heart is content. Enjoy the nature God has provided. Allow God to speak to your heart and the hearts of those around you while enjoying a variety of activities and team building exercises.

We host a number of enriching conference and family activities yearly. Conferences include our Ladies' Spring Refresher, Ladies' Fall Retreat, Truck in Trail Rides, Pinnacle Mountain MudRun (Spring and Fall), Fall Festival, Couples Getaway and our candlelit Live Nativity.

Please visit our website at www.camppinnacle.org or find us on Instagram or FACEBOOK to see times and dates for yearly hosted events.

For more information or to schedule a tour, contact Kayla or Steve:
518-872-9100 ext 102
1-866-RETREAT (738-7328)
info@camppinnacle.org

