



# CAMP PINNACLE NEWS

MARCH 2024 NEWSLETTER



## Proverbs 19:21

Many are the plans in a person's heart, but it is the Lord's purpose that prevails.



### Dear Pinnacle Families,

We are planners. We have plans for today, next week, Christmas, birthdays, dinners, weddings, you name it we plan for it.

And of course, we need to lay out our plans as much as possible, in order to get things accomplished. We set plans on our calendar to save the date, usually as early as possible so that no one else takes the date. Our lives are full of plans, which are all well and good.

We can make lots of plans, But let us make sure that we remember that God's purpose will prevail in our lives. He knows the plans that HE has for you!

We are excited about our Vision Dinner, Open House, and summer camp that is just around the corner!

**In Christ,**  
**Stephen Flach, Executive Director**

## UPCOMING EVENTS



### WILL YOU HELP US GET THE WORD OUT ABOUT

# hiring?



### Available Positions:

#### Counseling Staff

- Counselor (17+)
- Counselor in Training (16+)

#### Support Staff (16+)

- Kitchen Staff
- Housekeeping
- Ranch Hands
- High Ropes Instructor
- Paintball Instructor
- Fishing/Canoeing Instructor
- Archery Instructor
- Tie Dye Instructor
- Lifeguard
- Volunteer Opportunities

Looking for a Christ-centered job this summer? Camp Pinnacle has a position for you! Join us for an unforgettable summer in the mountains working for the glory of God to share the love of Jesus with over 600 campers! June 23 - August 10

### WILL YOU LEAVE US A REVIEW?

A great way to support Camp Pinnacle is to write us a review online!

Open your phone's camera and hover over this QR code to leave a Google review today.







# MARCH RE-CAP

It's been an exciting month looking towards the future season to come. We are encouraged and thrilled to announce that we have over 380 campers registered for summer camp! Our office has been busy preparing the necessary paperwork and planning details for the summer months, as well as accepting retreat bookings. Almost every weekend is currently booked with retreats from April - October. We are so thankful and excited to look ahead at the work that God is planning for our hands to take on this coming year.

This past month we had the honor of hosting a group of students from Faith Bible College International in Maine, as they volunteered with Mount Moriah Christian Academy. We were delighted to get to know these students during their stay. We also had a retreat group from the Anglican Diocese of Christ Our Hope. They enjoyed a reflective retreat and were lovely guests during their stay.



## STAFF SPOTLIGHT



Janet Tanis is our staff spotlight for the month of March! Janet has dedicated so much of her time and hard work over the years to Camp Pinnacle and we are so thankful. Currently Janet is operating as the Retreats Director, coordinating and facilitating all our our retreat groups. It's about to be our busy season! But Janet never fails to have a cheerful disposition even during the most difficult moments. For years, Janet has given her all and worked weekends and late nights to ensure that all of our guests have a welcoming, comfortable, and enjoyable stay on the mountain. Janet is very resourceful, too! She is always looking for ways to help things run more smoothly and help the ministry of Camp Pinnacle impact more lives for all of eternity. Thank you, Janet for your heart to love people the way Christ loves us and your dedication to Camp Pinnacle all these years!!



WHITE BIRCH CAMPUS - Camp Pinnacle



# SUPPORT A PROJECT

We would love for you to attend our Vision Dinner on April 6, 2024 at 6PM and hear more about our vision for the upcoming summer and beyond. Worship with us, eat with us and enjoy a silent auction fundraiser.

In light of our Vision Dinner & Silent Auction Fundraiser, we wanted to share with you some of the projects we hope to see accomplished in the next year, and the resources we are in need of to see them through.



## MCFATE LODGE REDECORATING PROJECT

We have a completed room design plan, and have listed on this registry the items that would be most beneficial for us to receive to accomplish this vision.

REGISTRY: [shorturl.at/tuySW](https://shorturl.at/tuySW)

Need: Items on the registry range from \$17-\$40 each



## PAINT FOR ALTA VISTA (STAFF HOUSING)

Currently the family home of our Camp Program Directors, the Alta Vista house is in need of a good paint job!

Need: \$2,000



## NEW WINDOWS FOR MEKEEL LODGE

This is a project on the top of our priority list! Many of the windows' seals have failed, negatively impacting utility costs.

Need: (24) double-hung windows at \$575 each

Total Material Cost: \$14,000



## PROPERTY PAVING

We have a company that is graciously willing to donate the labor costs for all of Main Camp to be paved.

Need: \$35,000 (materials)



## CONCRETE SLAB FOR UTILITY ROOM AT WHITE BIRCH LODGE

In order to complete some highly necessary updates to our water system for the daily operations of summer camp and the use of the White Birch Campus, we need a concrete slab laid at the back-side of the White Birch Lodge. Then, a pre-existing cabin building will be moved to become the new utility room.

Need: (est.) \$2,700

# VOLUNTEER OPPORTUNITIES

- PERSONS WITH EXPERIENCE REPLACING SIDING TO ASSIST IN FINISHING THE CHRISTIE HOUSE PROJECT
- LANDSCAPING IN SPRING/SUMMER
- PAINTING ROOMS IN MCFATE



**THE ICE ON THIS MOUNTAIN IS THAWING AND WE'RE GETTING READY FOR SUMMER!**

We have put together a Donation List of items that we would LOVE to have for this summer and years to come. Will you think and pray about being a part of this exciting opportunity to help us prepare and stock up for a summer of faith & FUN!



LITTLE AMERICA POND - Camp Pinnacle

STAFF PHOTOS - Camp Pinnacle

**PARTNER WITH US**



Enclosed is my tax deductible gift in the amount of \$ \_\_\_\_\_ .

I will give \$ \_\_\_\_\_ monthly to the work of Camp Pinnacle

- \_\_\_\_\_ Support for general Headquarters operating expenses
- \_\_\_\_\_ Horse Care
- \_\_\_\_\_ Janet Truax Campership Fund
- \_\_\_\_\_ Where most needed

Checks may be made payable to Camp Pinnacle and mailed to 621 Pinnacle Road, Voorheesville, NY 12186  
For Credit Card donations you can fill out the form below, call the office or visit our website.

I want to give \$ \_\_\_\_\_ to Camp Pinnacle! Name on card \_\_\_\_\_

Credit Card Number \_\_\_\_\_ CVV \_\_\_\_\_

Address for Card \_\_\_\_\_ City, State, Zip \_\_\_\_\_

For online giving by credit or debit card:

1. Go to the Camp Pinnacle website [www.camppinnacle.org/donate-1](http://www.camppinnacle.org/donate-1)
2. Fill out the form and click DONATE.
3. Complete the checkout at PAY PAL.

[www.camppinnacle.org](http://www.camppinnacle.org)  
 ~ 518.872.9100 ~  
[info@camppinnacle.org](mailto:info@camppinnacle.org)

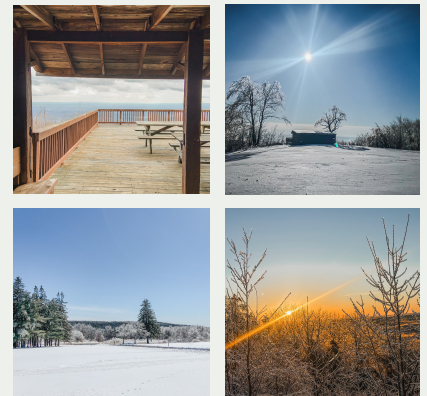
Name \_\_\_\_\_ Phone \_\_\_\_\_

Address \_\_\_\_\_ Email \_\_\_\_\_

City, State, Zip \_\_\_\_\_ Send Receipt via \_\_\_\_\_ US Post \_\_\_\_\_ email

(GE Employees and retirees may participate in the GE Foundation Matching Gifts Program in their giving to Camp Pinnacle. Legacy giving through a portfolio is also available. Visit our website or call the office for further details.)

*Thank you for making it possible for kids to know Christ and for groups to have a meeting place with God.*



**THANK YOU!**

