



CAMP PINNACLE

RETREATS



BOOKLET

An informational guide to hosting a retreat at
Camp Pinnacle Bible Camp & Retreat Center

www.camppinnacle.org



Table of Contents

- 01** Who We Are
- 02** Statement of Faith
- 03** Rules & Regulations
- 04** Meeting Spaces
- 06** Lodging
- 11** Activities
- 12** Property Map
- 13** Code of Conduct
- 14** Contact Us



Who We Are

“Helping people walk in God’s paths” since 1898

God has strategically placed Camp Pinnacle’s 880-acre facility at the top of the scenic Helderberg Mountains, overlooking the Capital District of New York State to impact many people for Christ.

The purpose of Pinnacle Ministries is to build the Kingdom of God by preaching the gospel, making disciples, and enhancing the ministry of the local church by partnering with them and other ministries. We accomplish this through summer camps, year-round retreats, conferences and other opportunities God makes available to introduce people to Jesus, promoting a closer relationship and service with God.

Camp Pinnacle is registered as a 501c3 organization.

“The aim and purpose of Camp Pinnacle has always been the same; to lift up Jesus Christ as the power of God for salvation, to develop Christian character in young people and to give them a happy and wholesome vacation.”

-Miss Lucy Jones, The Long Road to Pinnacle 1947

STATEMENT OF FAITH

We believe that every person must be afforded compassion, love, kindness, respect, and dignity. Hateful and harassing behavior or attitudes directed toward any individual are to be repudiated and are not in accord with Scripture, nor the doctrines of Camp Pinnacle.

Mark 12:28-31; Luke 6:31

We believe in the Divine inspiration of the Bible, that the books from Genesis to Revelation are without error, and that they are the infallible authoritative Word of God.

2 Timothy 3:16; 2 Peter 1:19-21; Revelation 22:18-19

We believe that there is one God, eternally existent in three persons: Father, Son, and the Holy Spirit.

Psalm 90:2; John 3:16; Matthew 6:9-15; Genesis 1:1-3; John 14:10,16-17; 15:26; Matthew 28:19

We believe in the Deity of our Lord Jesus Christ, in His virgin birth, in His sinless life, in His miracles, in His vicarious and atoning death through His shed blood, in His bodily resurrection, in His ascension to the right hand of the Father, and in His personal return to reign in power and glory.

Matthew 1:23; 25:31-46; John 1:1-2; Hebrews 7:24-25, 9:24; Romans 3:24-25, 4:25; Ephesians 1:7; Philippians 2:5-11; 1 Peter 1:3-5; Luke 2:29-35; Acts 10:36, Romans 6:23

We believe in the fall of man, his moral depravity, and the necessity of the new birth.

Genesis 1:27, 3:1-6; Romans 3:10-12, 5:12; 1 John 1:8-10; Hebrews. 9:27; Job 14:5

We believe in the substitutionary atonement through the shed blood of Christ, in justification by faith, and in regeneration by the Holy Spirit. This is God's provision for the salvation of lost and sinful men from the penalty and power of sin.

John 1:12; 1 Peter 1:18-19; Acts 2:37-38; Romans 3:23, 5:8, 8:15-17, 10:9-10; Ephesians 2:8-9

We believe in the present ministry of the Holy Spirit, by whose indwelling the Christian is enabled to live a Godly life.

John 14:26, 16:8-11; Romans 12:3-8; 1 Corinthians 12:11,28; Ephesians 1:13-14, 4:7-12, 5:18; 1 John 2:20, 2:26-27

We believe in the resurrection of both the saved and the lost: they that are saved unto eternal life, and they that are lost unto eternal punishment.

Ephesians 1:13-14; Philippians 1:6, 2:13; Romans 5, 6, 8:28-39

We believe in the spiritual unity of believers in Christ.

1 Corinthians 1:10; Acts 4:32

We believe that God wonderfully and immutably creates each person as male or female. These two distinct, complementary sexes together reflect the image and nature of God. Rejection of one's biological sex is a rejection of the image of God within that person.

Genesis 1:26-27

We believe the term "marriage" has only one meaning: the uniting of one man and one woman in a single, exclusive union, as delineated in Scripture. We believe that marriage between one man and one woman, for life, uniquely reflects Christ's relationship with His Church. We believe that God intends sexual intimacy to occur only between a man and a woman who are married to each other. We believe that God has commanded that no intimate sexual activity be engaged in outside of a marriage between a man and a woman. We believe that any form of sexual immorality (including adultery, cohabitation, fornication, homosexual behavior, bisexual conduct, bestiality, incest, or use of pornography) is outside of God's design for humanity. We understand these actions to be sinful and offensive to God. We believe that God offers redemption and restoration to all who confess and forsake their sin, seeking His mercy and forgiveness through Jesus Christ.

Genesis 2:18-25; Ephesians 5:21-33; 1 Corinthians 6:18; 7:2-5; Hebrews 13:4; Matthew 15:18-20; 1 Corinthians 6:9-10; Acts 3:19-21; Romans 10:9-10; 1 Corinthians 6:9-11; Mark 12:28-31; Luke 6:31; Ephesians 4:32

We believe that all human life is sacred and created by God in His image. Human life is of inestimable worth in all its dimensions, including pre-born babies, the aged, the physically or mentally challenged, and every other stage or condition from conception through natural death. We are therefore called to defend, protect, and value all human life.

Psalm 139, John 3:16





Rules & Regulations

- 01** **No smoking, vaping, alcohol or drug usage on camp property.** If alcohol or drugs are found in possession while on campus or in the lodging facilities (during or after guests' stays), guests will not be allowed to return.
- 02** **Do not enter any pens with live animals** without a Camp Pinnacle staff member.
- 03** **Camp equipment must be returned to its original location,** unless arranged otherwise prior to the event.
- 04** **Changing areas, restrooms and showers are to be used by members of the designated biological sex only.** Family bathrooms are available in Snack Shop.
- 06** **Abusive, foul language and violent behavior are strictly prohibited.** Any person exhibiting such behavior will be required to leave the premises.
- 07** **Guests must tidy lodging rooms before they leave:** fold blankets if provided and strip the beds. Double check your room for any items left behind before check-out. This includes under beds, in bathrooms, and in common areas.
- 08** **Quiet Hours are from 11PM – 7AM.** Guests must be kind and considerate of those around them. If there are activities planned for later in the night, please let our Director or Office Manager know ahead of time so we can plan accordingly.

**THANK YOU FOR CHOOSING
CAMP PINNACLE BIBLE CAMP & RETREAT CENTER**



STEVENS DINING HALL



SNACK SHOP



BESSIE WOOD LOUNGE



Meeting Spaces

Stevens Dining Hall has a seating capacity of 185 people and can be used for meals as well as meetings. Our year-round Chef of over 20 years creates delicious meals that are served buffet-style.

Attached to the Dining Hall down a small set of stairs, guests will find **the Snack Shop** which features a fireplace, foosball table, pool table, snacks and more! This extra room seats 40 people.

Bessie Wood Lounge is a cozy meeting room, which can be set up with a sound system and a projector. The space seats up to 60 people and offers a kitchenette with coffee, its own bathrooms, and is conveniently located directly off of Stevens Dining Hall.



TABERNACLE



GYMNASIUM



CHRISTIE GARDENS



SUMMER DINING / THE ARK

The **Tabernacle** is a rustic meeting space designed for worship, offering vaulted ceilings, a sound system, a small breakout room, and a large fireplace for heating. This space has a seating capacity of 160 people.

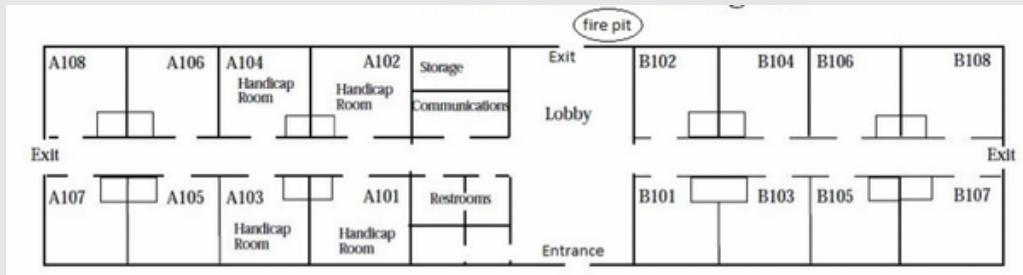
The **Gymnasium** can be used as a recreational space or as a large meeting space with a seating capacity of 325. Guests will find basketball hoops, a volleyball net, a rock-wall, and lots of room for organized activities. The **Loft** is located on the second floor of the Gymnasium and can be used as a smaller meeting space.

Summer Dining or “The Ark” is a large meeting room with the capacity to seat 97 people located directly off of the Snack Shop. It can be heated for periods of time during the winter, but it is ideally used during the warmer months.

Christie Gardens is a great outdoor area for group gatherings, breakout sessions, etc. Located right outside of Bessie Wood Lounge, the area offers picnic tables and a BBQ grill.

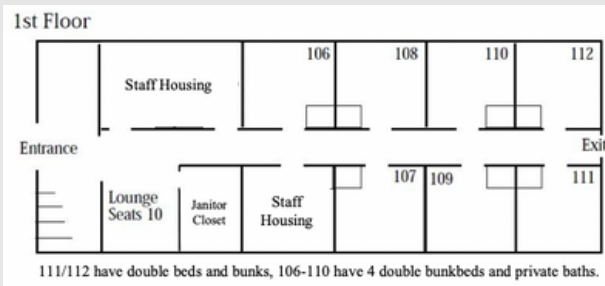
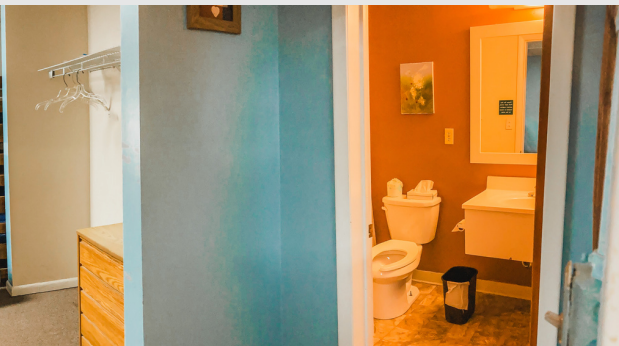


McFate Lodge



McFate Lodge is our finest facility, settled perfectly between the trees and just a short walk to the Dining Hall or Gymnasium. This lodge has two wings with 8 rooms on either side. There is a large common room dividing them. This cozy lounge can seat up to 50 and is equipped with a gas fireplace, kitchenette, and comfortable chairs ideal for an intimate retreat. Four of the rooms are fully handicap accessible. Each room contains one queen size bed and one set of bunk beds perfect for a family friendly, hotel-style feel. McFate Lodge sleeps 64 people.

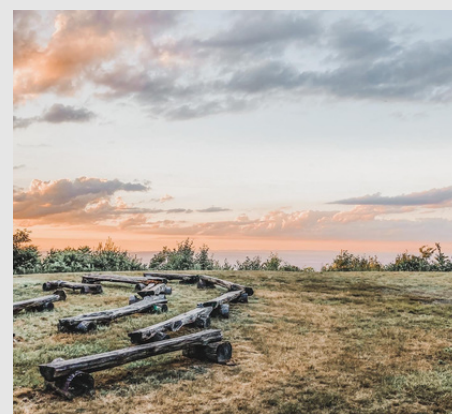
Mekeel Lodge



Mekeel Lodge is our largest lodging facility. This two story building has a total of (16) dorm-style rooms, (6) on the first floor and (10) on the second floor. The total sleeping capacity of the lodge is 144 people. On the first floor, each room offers a full private bathroom. The second floor is equipped with two common bathrooms at the end of the hall.

Located upstairs, guests will find the **Mekeel Lounge**, which is ideal for a meeting space, game/movie night, or comfortable lounging and can seat up to 40 people.

PINE RIDGE CAMPUS



Pine Ridge Campus offers bunkhouse-style rooms with a separate building for bathrooms and showers. Being that it is slightly diverged from “main camp,” this campus allows groups of guests a sense of privacy during their stay. Enjoy our rustic view with a path that takes you directly up to the Sunset Ridge overlook.

There are seven cabins that sleep (10) people and one cabin that sleeps (8). Guests will also find a large indoor field house which can be used for games or meetings/gatherings. This field house also offers a kitchenette with cabinets and an outdoor sink. Pine Ridge Campus sleeps 78 people and has seating for up to 200.

WHITE BIRCH CAMPUS



White Birch Campus is located directly across the road from the Main Campus. Guests will be just a short walk from a breathtaking view overlooking Albany and beyond. Beautiful sunrises and the horse pasture also paint a wonderful backdrop for the camp experience on this side of the campus.

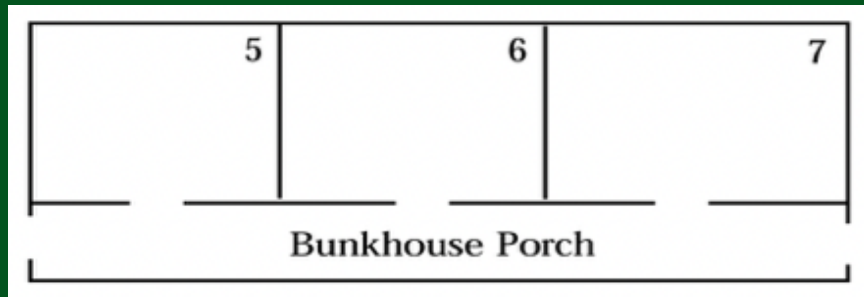
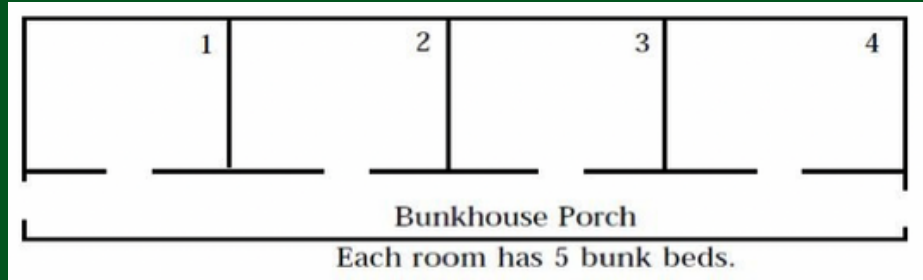
There are two different types of lodging quarters at White Birch. The “rustic dorms” have a total of (6) cabins each with (10) beds. The restroom and showers for these cabins are a separate facility located just outside the building. The “indoor dorms” offer (6) rooms each with (10) beds. Bathrooms and showers are located directly inside the building.

Guests will also find an indoor field house (able to accommodate seating for 200) which can be used for games or meetings/gatherings. Behind the field house is a fire pit with rustic log benches. There is an outdoor stage, perfect for worship services or talent shows, located on the playing field in the center of the campus.

LODGING FLOORPLANS

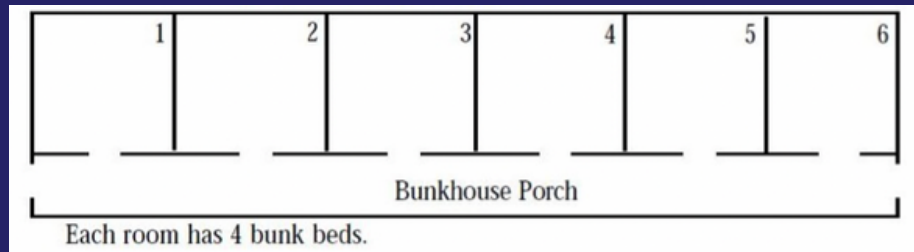


PINE RIDGE

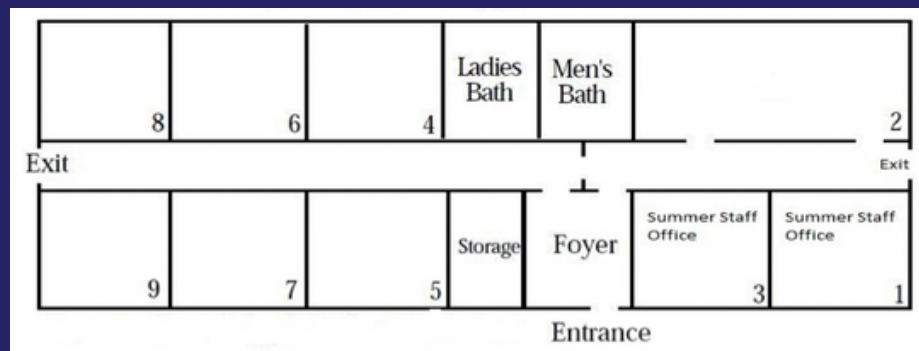


The two bunkhouses at Pine Ridge Campus share a shower/bathroom facility located between them.

WHITE BIRCH



White Birch Bunkhouse



White Birch Lodge

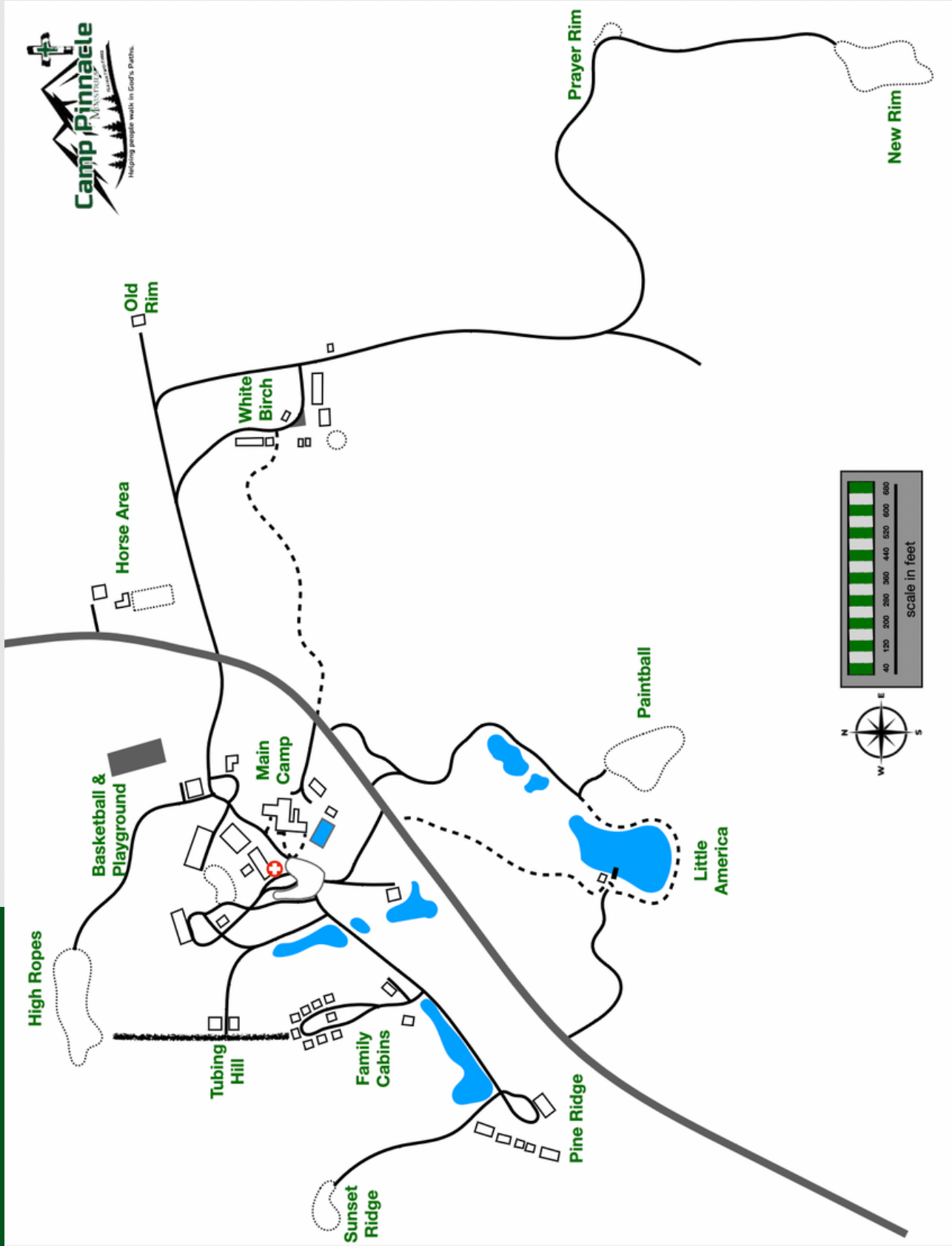
ACTIVITIES



- SWIMMING
- GROUP SPORTS
- HORSE-BACK RIDING
- PAINTBALL
- HIGH ROPES
- CHALLENGE COURSE

- ROCK-WALL CLIMBING
- ARCHERY
- FISHING
- CANOEING
- HIKING
- & MORE

CAMP PINNACLE PROPERTY MAP



Camp Pinnacle – Facility Usage with Lodging - Standard of Conduct Agreement

Camp Pinnacle’s purpose is to share Christ's message, encourage growth, and support the ministry of the local church. We accomplish this through summer camps, year-round retreats, and conferences promoting growth in Christ and practical service.

Camp Pinnacle’s facilities were provided by God’s goodness and the sacrificial generosity of its supporters. All Camp property is consecrated and set apart to be used exclusively to glorify God and edify the Body of Christ (Col. 3:17). Therefore although the facilities are not generally open to the public, the Camp makes its facilities available to approved groups on a case-by-case basis as a witness to its faith, in a spirit of Christian charity, and as a means of demonstrating the Gospel of Jesus Christ in practice. The Camp’s facilities may not be used for activities that contradict, or are inconsistent with, the Camp’s beliefs, as summarized in the Camp’s Statement of faith.

Facility Use Guidelines

1. Users may only enter and use those areas of the facilities that have been reserved.
2. Food and beverages may be eaten in the dining room or designated picnic areas. Event attendees are asked to clear their tables and place trash in cans provided.
3. Camp equipment must be returned to original placement, unless arranged otherwise prior to the event.
4. Turn off all lights upon departure.
5. Sex-specific changing areas, restrooms, and showers are to be used by members of the designated biological sex only. Family bathrooms are available in the Snack Shop.
6. Group leaders are required to designate lodging assignments in accordance with our Statement of Faith. No biological boys are allowed in biological girls’ rooms or vice versa.
7. We ask all guests to refrain from fornication and sexual activity outside of the marriage covenant. This includes heterosexual and homosexual activity, pornography, and adultery.
8. Abusive or foul language, violent behavior, and drugs, smoking, vaping or alcohol are strictly prohibited on Camp premises. Any person exhibiting such behavior will be required to leave the premises.

I understand that I will be responsible for any damages to the Camp facilities resulting from this proposed use of facilities. I understand that the Camp believes disputes are to be worked out between parties pursuant to Matthew 18 and 1 Corinthians 6, without recourse to the courts. Accordingly, I agree to attempt resolution of any disputes through Christian mediation.

By signing below, I acknowledge that Camp Pinnacle is a faith-based Christian camp. As such, it teaches and operates in accordance with its sincerely held religious beliefs, as summarized in its Statement of Faith. I agree to respect these guidelines and to refrain from behaving in ways that are not consistent with these guidelines. I will communicate these guidelines to our group and take responsibility for keeping all members of our group accountable to abide by the guidelines.

Group Leader:

Print Name

Signature

Date

Camp Official:

Print Name

Signature

Date



CAMP PINNACLE

Contact Us



518-872-9100



info@campinnacle.org



621 Pinnacle Rd. Voorheesville, NY 12186

We are located approximately 30 minutes (18 miles) from Albany International Airport, I-87 and I-90. In the Helderberg Mountains, just 20 minutes from Albany, we are centrally located in beautiful Upstate New York.

